

An abstract painting featuring a vibrant palette of colors including blue, green, brown, red, and yellow. The brushstrokes are thick and expressive, creating a sense of movement and depth. The composition is layered, with various colors and textures overlapping. The overall style is gestural and energetic.

BLOW BACK INS

CATALOGUE 2025

BROKEN HILL
CITY ART GALLERY



7th February -27th April 2025

Broken Hill City Art Gallery

Cover image: **Ann Thomson**, *Broken Hill series III*, Mixed media on paper, 2024, 35x50cm. Photography by Riste Andrievski.

ACKNOWLEDGEMENT OF COUNTRY

We acknowledge the traditional custodians of the land, the Wilyakali people of the Barkindji Nation. We pay our respects to their Elders, past, present, and emerging, and extend that respect to all Aboriginal and Torres Strait Islander peoples.

We recognise the rich cultural heritage, stories, and art that have been shared across this land for tens of thousands of years. As we celebrate creativity in its many forms, we honour the enduring connection of Aboriginal peoples to Country and their vital contributions to the cultural fabric of this region.

BLOW BACK INS

At the beginning of May 2024, a group of notable Australian artists visited Broken Hill and worked intensively for two weeks, exploring the township and its surrounding landscape. They followed in the footsteps of the original "Blow-In Art Collective," which visited Broken Hill in 2014, several members of whom are included in this group of 'Blow Back-Ins.' Based at the Palace Hotel, they worked at various locations, including the iconic Junction Mine and Line of Lode.

As with the first 'Blow-Ins,' a significant body of work emerged from the collective's appreciation of Broken Hill and its place on the edge of the desert. Media ranging from salvaged steel to watercolour will form a compelling exhibition at the Broken Hill City Art Gallery, opening on 7 February.

The Blow Back-Ins are well-known painters who practise 'en plein air' or draw inspiration from the landscape in their studio work. They include:

Ann Thomson
Ann Cape
Chris Gentle
Daniel Pata
Gina Bruce
Kerry McInnis
Paul Connor
Renata Pari-Lewis
Sophie Cape
Mike MacGregor
Willemina Villari



Ann Cape, *Exploring Broken Hill*, Oil on canvas, 2024, 185 x 185cm.
Left to Right, Top: Gina Bruce, Chris Gentle, Mike MacGregor. Middle: Ann Thomson, Willemina Villari, Sophie Cape. Bottom: Renata Pari-Lewis, Kerry McInnis, Danny Pata and Paul Connor.

01. ANN THOMSON

Ann Thomson, Broken Hill series I, Mixed media on paper, 2024, 25 x 25cm. Photography Riste Andrievski.



Ann Thomson, Broken Hill series II, Mixed media on paper, 2024, 25 x 25cm. Photography Riste Andrievski.



Ann Thomson, Broken Hill, Acrylic on tarred paper on canvas, 2024, 168 x 71cm. Photography Riste Andrievski.



Ann Thomson, *Broken Hill series III*, Mixed media on paper, 2024, 35x50cm. Photography by Riste Andrievski.

02. ANN CAPE



Ann Cape, *Rosie at the Palace*, Oil on canvas, 2024, 120 x 91cm.



Ann Cape, *Exploring Broken Hill*, Oil on canvas, 2024, 185 x 185cm.
Left to Right, Top: Gina Bruce, Chris Gentle, Mike MacGregor.
Middle: Ann Thomson, Willemina Villari, Sophie Cape.
Bottom: Renata Pari-Lewis, Kerry McInnis, Danny Pata and Paul Connor.

03. CHRIS GENTLE

Chris Gentle, *Afternoon light*, Oil on Polycotton, 2024, 102 x 142cm.



Chris Gentle, *Menindee Lake 2*, Oil on Polycotton, 2024, 76 x 92cm.



Chris Gentle, *Menindee Lake 3*, Oil on Polycotton, 2024, 76 x 92cm.

Chris Gentle, *North Mine Broken Hill*, Oil on Polycotton, 2024, 122 x 138cm.



Chris Gentle, *Menindee Lake*, Oil on Polycotton, 2024, 76 x 92cm.



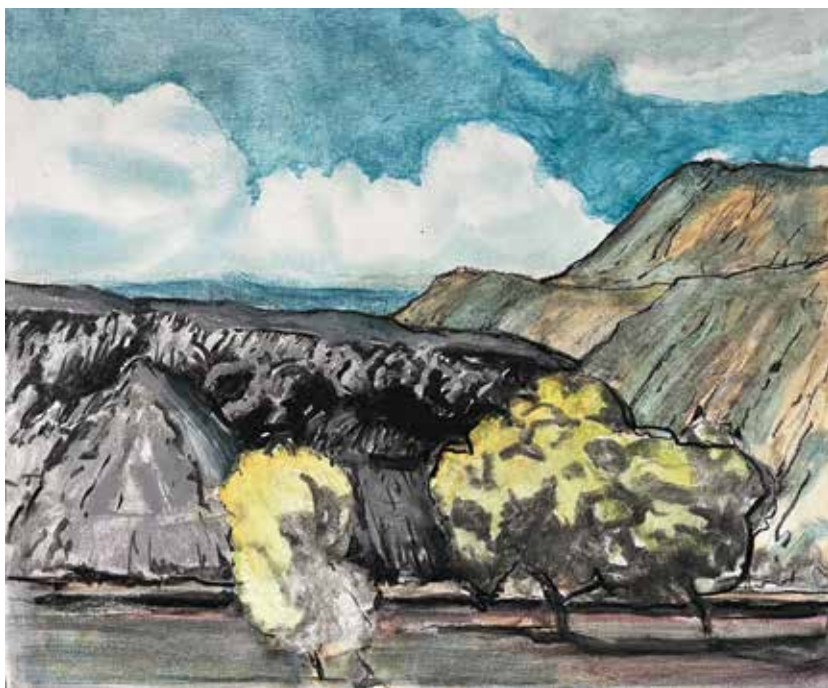
Chris Gentle,
Broken Hill
minescape, Oil on
linen, 2024, 150 x
180cm.

04. DANIEL PATA

Daniel Pata,
Compositional odyssey,
slag heap, Broken Hill,
Oil on canvas, 2024, 50
x 60cm.



Daniel Pata, *The Palace*
view, Broken Hill,
Oil on canvas, 2024, 50
x 60cm.

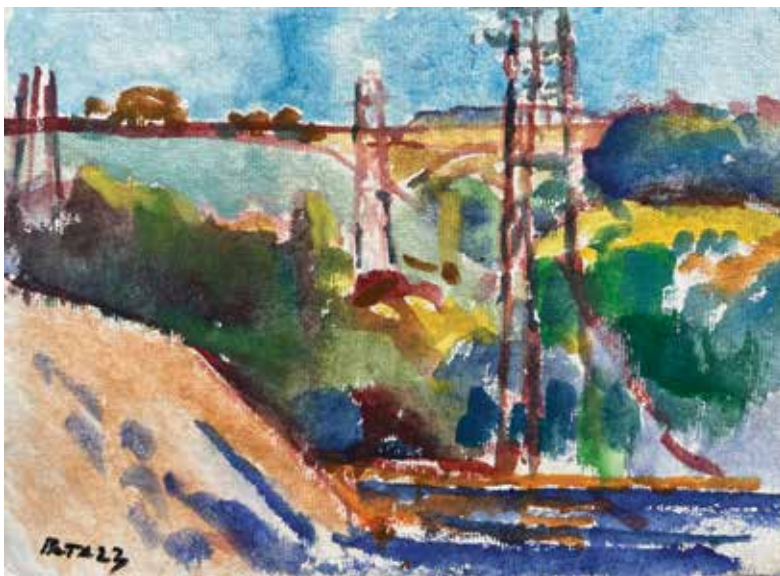


Daniel Pata, *Shadows of the past,* Pencil on paper, 2024, 34 x 20cm.



Daniel Pata, *Of miners past*, Oil on canvas, 2024, 100 x 120cm.

Daniel Pata, *Minescape*,
Watercolour and ink on
paper, 2024, 17 x 30cm.



Daniel Pata, *Mine
remnants*, Oil on board,
2024, 25 x 32cm.



Daniel Pata, *A mountain
of labour*, Ink on paper,
2024, 18 x 34cm.



Daniel Pata,
*Human
impressions*,
Watercolour and
ink on paper,
2023, 17 x 20cm.



Daniel Pata, *Remnant
structure*, pastel on
paper, 2024, 16 x 20cm.

Daniel Pata,
Composition,
Pastel on
paper, 2024, 16
x 20cm.



Daniel Pata,
*A mountain
of labour 2,*
Watercolour
and ink on
paper, 2024,
17x 34cm.

Daniel Pata,
*Mountain
of labour,*
Pencil on
paper, 2024,
17x34cm.



Daniel Pata,
*Afternoon
light,* pencil on
paper, 2024, 17
x 30cm.

05. GINA BRUCE



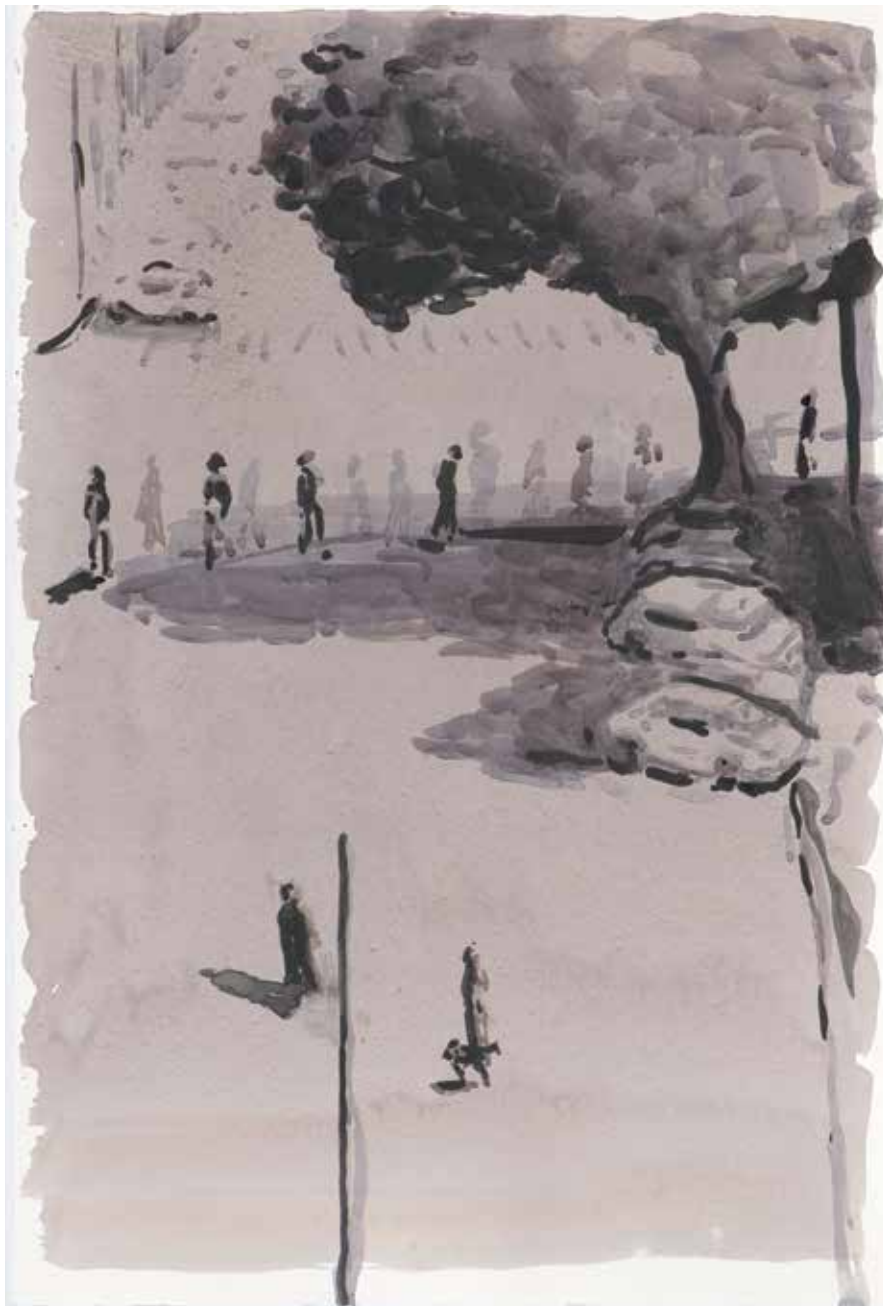
Gina Bruce, *The Palace and the shade tree*, Ink on paper, 2024, 38 x 28cm. Photography by Michele Brouet.



Gina Bruce, *Figures walking*, Ink on paper, 2024, 28 x 38cm. Photography by Michele Brouet.



Gina Bruce, *Shade tree, Broken Hill*, Oil on canvas, 2024, 100 x 65 cm. Photography by Michele Brouet.



Gina Bruce, *Shade tree (grey)*, Watercolour on paper, 2024, 57 x 38cm.
Photography by Michele Brouet.



Gina Bruce, *2 Figures, 2 cars, Broken Hill*, Oil on canvas, 2024, 94 x 61cm.
Photography by Michele Brouet.



Gina Bruce, *The Palace and the shade tree II*, Ink on paper, 2024, 38 x 28cm.
Photography by Michele Brouet.



Gina Bruce,
Walking in the Shade, Ink on paper, 2024,
28 x 38cm.
Photography by
Michele Brouet.



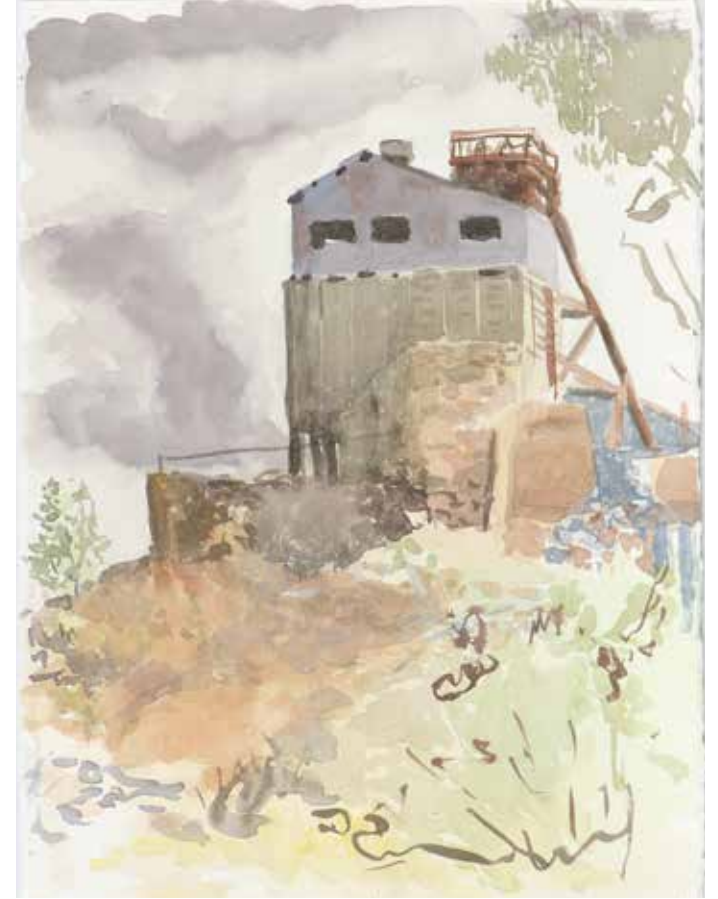
Gina Bruce,
Drawings from a burnt out house near Broken Hill,
ink on paper,
2024, 36 x 56cm.
Photography by
Michele Brouet.



Gina Bruce, *Junction Mine I*, Watercolour on cotton paper, 2024, 57 x 38cm. Photography by Michele Brouet.



Gina Bruce, *Junction Mine cottage*, Watercolour on cotton paper, 2024, 38 x 28cm. Photography by Michele Brouet.



Gina Bruce, *Junction Mine II*, Watercolour on cotton paper, 2024, 38 x 28cm. Photography by Michele Brouet.

06. KERRY MCINNIS



Kerry McInnis, *Survivor tree*, Mixed media on paper, 2024, 76 x 56cm.



Kerry McInnis, *Junction Mine*, Mixed media on paper, 2024, 56 x 76cm.



Kerry McInnis, *Mayhem*, Synthetic polymer paint on canvas, 2024, 76 x 102cm.

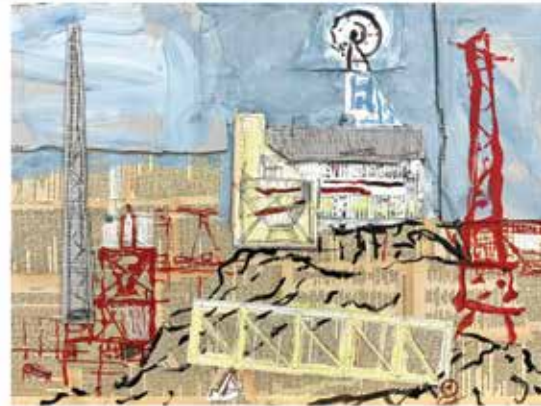


Kerry McInnis, *The Broken Hill*, Synthetic polymer paint on canvas, 2024, 76 x 102cm.

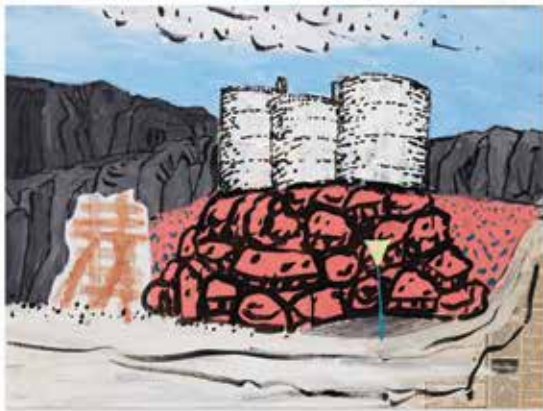


Kerry McInnis, *Underground*, Synthetic polymer paint on canvas, 2024, 76 x 102cm.

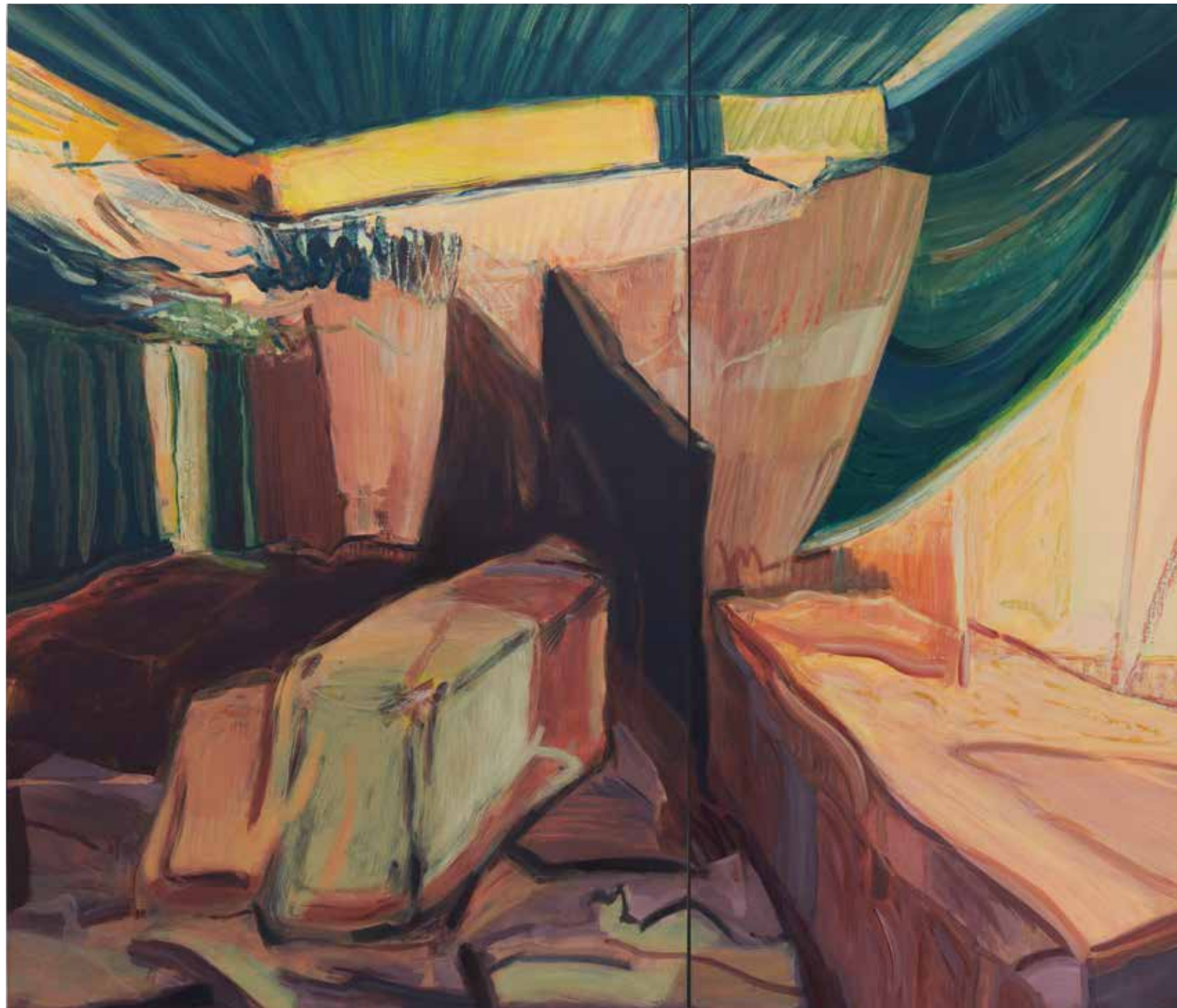
07. PAUL CONNOR



Paul Connor, *9 Days in the life of Broken Hill parts 1 and 2*, Mixed media on canvas board, 2024, 190 x 540cm.
Photography by Felicity Jenkins.



08. RENATA
PARI-LEWIS



Renata Pari-Lewis, *Before the beginning and after the end*, Acrylic on canvas, 2024, 180 x 480cm. Photography by Felicity Jenkins.



09. SOPHIE CAPE

Sophie Cape,
Beneath the remains,
Rust on canvas,
2024, 100 x 150cm.



Sophie Cape,
Junction Mine, Local mining pigments on canvas, 2024, 100 x 150cm.



Sophie Cape,
Grown from ash,
Charcoal and local soil on canvas,
2024, 100 x 150cm.



Sophie Cape,
Line of lode, Local mining pigments on canvas, 2024, 100 x 150cm.





Sophie Cape, *Machines of flying fire*, Steel dust, silver, copper and charcoal on canvas, 2024, 170 x 220cm.

10. MIKE MACGREGOR



Mike MacGregor, *Broken Hill landscape*, Salvaged steel, 2024, 60 x 46 x 7.5cm.



Mike MacGregor, *Under the hill*, Salvaged steel, 2024, 48 x 40 x 22cm.



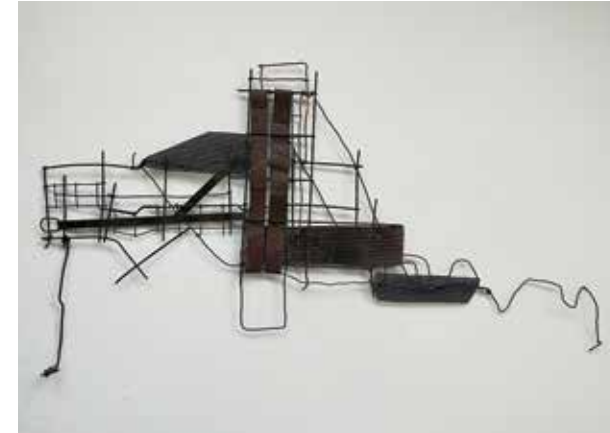
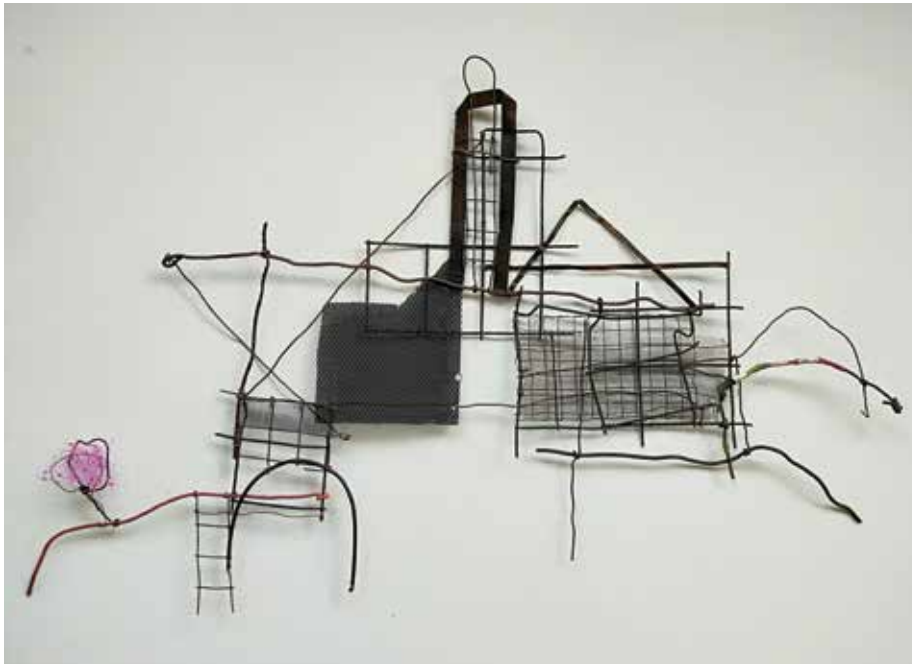
Mike MacGregor, *The brutal mine*, Corten, and mild steel, 2024, 41 x 41 x 3cm.



Mike MacGregor,
Reminiscence, Corten
and mild steel, 2024,
41 x 41 x 4cm.

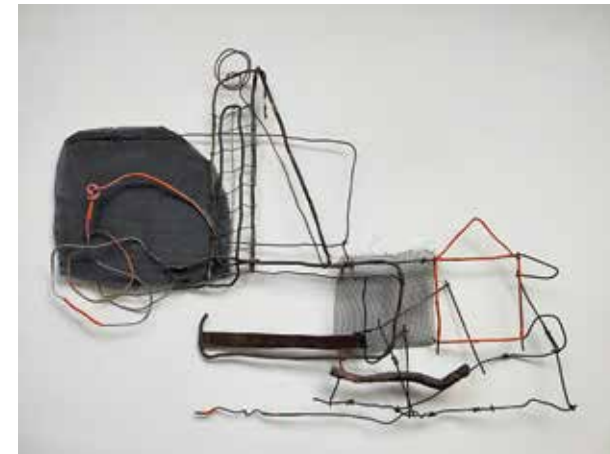
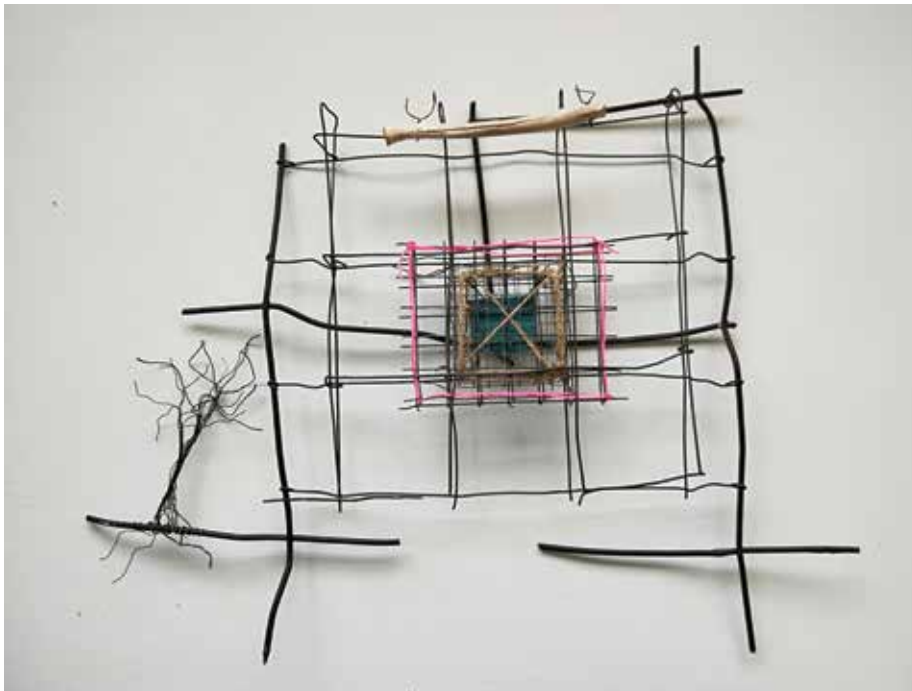
11. WILLEMINA VILLARI

Willemina Villari,
*Silver City with
a touch of pink,*
Recycled wire, rice
paper and plastic
netting, 2024, 48 x
78cm.

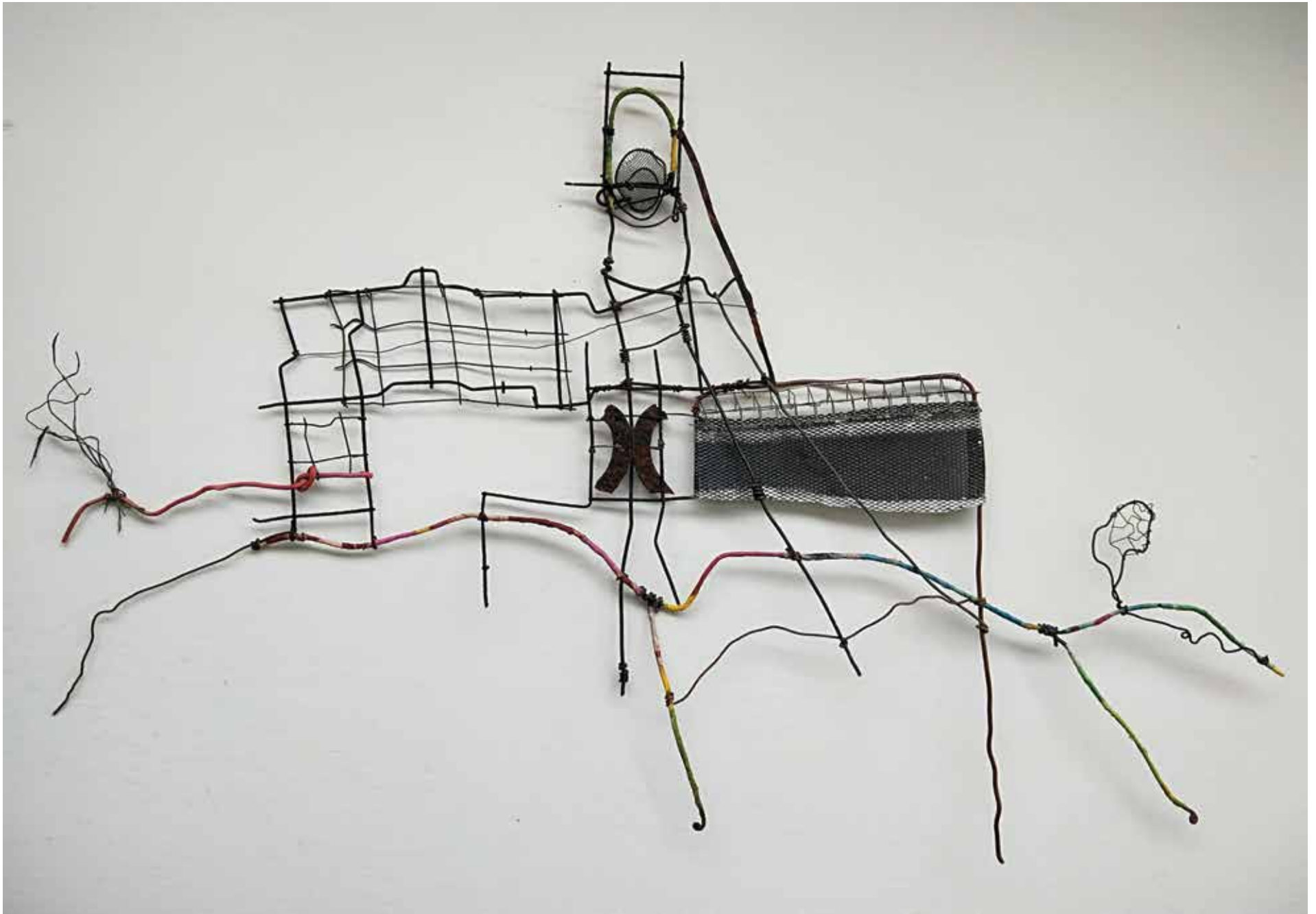


**Willemina
Villari,**
Hillside,
Recycled wire,
2024, 36 x
64cm.

Willemina Villari,
Memorial, Recycled
wire, string, rice
paper and bone,
2024, 54 x 66cm.



**Willemina
Villari,** *At the
Line of Lode,*
Recycled
wire and rice
paper, 2024,
47 x 85cm.



Willemmina Villari, *Touching the sky*, Recycled wire and rice paper, 2024, 54 x 86cm.



Willemina Villari, *Slag heap*, Mixed media and collage on paper, 2024, 45 x 56cm.



Willemina Villari, *Yellow building*, Mixed media and collage on paper, 2024, 45 x 56cm.

BLOW BACK INS

01. ANN THOMSON

Represented by Defiance Gallery

Ann Thomson is one of Australia's leading artists, known for her vibrant, expressive compositions. With a career spanning over six decades, she is best known for her large-scale public commissions, *Ebb Tide* for the Sydney Convention Centre and *Australia Felix* for the Seville World Expo. She has won several art prizes and residencies and is represented in many public collections both in Australia and overseas, including the *Tysson/Bornemisza collection*.

02. ANN CAPE

Ann Cape, an Australian artist and teacher with over 40 years of experience, explores themes of presence and place through portraiture, drawing, and sculpture, inspired by Outback Australia. A Fellow of the Royal Art Society and an alumna of the National Art School, her career includes selections for the *Archibald Prize*, *Portia Geach Portrait Prize*, *Doug Moran*, and *Dobell Drawing Prize*, over 80 regional awards,

and exhibitions at Mosman and Shoalhaven Regional Galleries. Her work is featured in collections such as *AMP* and *Mudanjiang Art Academy*, China. Cape has taught widely, undertaken public commissions, and frequently judges art prizes. She is also featured in *Who's Who of Australian Women*.

03. CHRIS GENTLE

Originally from Sussex, England, Christopher Gentle is a celebrated artist and educator who has lived in Australia since 1967. Trained in painting, sculpture, and lithography at *West Sussex College of Art* and *London University*, he taught at the *National Art School* and was the founding director of the *Ivan Dougherty Gallery*, retiring as a Senior Lecturer at *UNSW* in 1994.

With a career spanning four decades, Gentle's work explores the Australian landscape through themes of decay, renewal, and time, recently embracing abstraction.

He has held over 40 exhibitions, undertaken residencies at the *Royal Botanic Gardens* and *Hill End*, and is a member of the *Australian Watercolour Institute*. His work is in major collections, including the *Australian National Gallery* and *National Portrait Gallery*.

04. DANIEL PATA

Represented by Artsite Contemporary

Daniel Pata, known for his rich painterly surfaces and dedication to drawing, is celebrated for his plein-air landscape subjects.

He responds to light, shade, and colour, giving distinction to his subject. With added compositional factors, an alignment is reached with abstract qualities. These qualities, influenced by his excursions to Europe, especially *Paris*, where a residency at the *Cité Internationale des Arts* began a deep study of the 'School of Paris' painting.

Pata has also taught at many art institutions, lecturing in painting and drawing, especially at *The National Art School*, Sydney, for over 30 years. A member of the *Australian Watercolour Institute* since 2004, he also served as its vice-president for several years.

A 2021 *Wynne Prize* finalist, Pata has exhibited widely in Australia and overseas and is held in public collections such as *St. Peter's College*, *Oxford University*, *National Art School*, Sydney, and *The National Gallery*, Canberra, as well as in private and corporate collections worldwide.

05. GINA BRUCE

Represented by Robin Gibson Gallery

Gina Bruce is a celebrated painter recognised for her en plein air works and distinctive artistic style. After earning a commerce degree from the *University of Sydney* in 1998, she shifted her focus to art, graduating with honours from the *National Art School*. She has held nine solo exhibitions at the *Robin Gibson Gallery*, Sydney, between 2004 and 2024.

Bruce's accolades include the *Waverley Art Prize* (2011), the *Lloyd Rees Memorial Youth Art Award* (2002), and the *Gruner Prize* for Landscape Painting (2000). Residencies, including the *Denise Hickey Paris Studio Residency* (2003) and the *Nokia Asia Pacific Art Residency* in Bangkok (2002), have significantly influenced her career. Her paintings, known for their dynamic exploration of landscapes and figurative compositions, continue to gain critical acclaim in major competitions.

06. KERRY MCINNIS

Represented by Wagner Contemporary Gallery

Kerry McInnis is an awarded painter known for her expressive en plein air works spanning figurative and landscape genres. Spending

her childhood in the Philippines and in Guatemala, she studied fine art at the *Sorbonne* and holds a Bachelor of Fine Art and French (Honours) from *Middlebury College*, Vermont (1974), and a Master's in Art Conservation from *Canberra University* (1981). Since moving to Australia in 1975, she has gained a reputation for her dynamic exploration of memory, identity, and place.

McInnis has won the *Archibald Salon Holding Redlich People's Choice Award* (2019) and the *Adelaide Perry Drawing Prize People's Choice Award* (2024). Her works have been exhibited for over 25 years in solo and group shows at *Wagner Contemporary Gallery* (Sydney), *Solander* and *Nancy Sever Galleries* in Canberra, *Canberra Museum and Art Gallery*, *Goulburn Regional Gallery*, and are held in collections across Australia.

07. PAUL CONNOR

Represented by Art Atrium and Art Atrium48 Gallery

Paul Connor is a contemporary Australian artist whose en plein air works blend traditional techniques with contemporary abstraction.

Over 30 years his art has been exhibited here and abroad and is held in public and private collections in Australia, Hong Kong, New Zealand, and England, including the

Australian Embassy in Beijing (courtesy of *Artbank*). His interest in the environment has led to positions on the boards of *The Australian Museum* and *Lizard Island Reef Research Station*.

As founding director of the *NSW Parliament Plein Air Painting Prize*, Connor has helped revitalise this tradition in Australian art. He won the *Pro Hart Outback Art Prize* (2024) and is a frequent finalist in the major Australian art prizes.

08. RENATA PARI-LEWIS

Represented by Nanda Hobbs Contemporary

Renata Pari-Lewis is a Sydney-based painter. She studied fine art in London before completing a Bachelor of Fine Arts and a Master of Fine Arts at the *National Art School*.

Renata explores ideas of home, cultural identity, tradition, and the estrangement from these in her work. Rather than depicting landscape per se, she's interested in the way a particular physical environment - be it interior or exterior, natural or constructed - shapes one's emotional experience.

She has exhibited widely in solo and group exhibitions.

Notable awards include finalist positions in the *Portia Geach Memorial Award* and *Darling Portrait Prize*. Her solo exhibitions include *What I Have Held* (2024), *Familiar, Unfamiliar* (2022), and *Intimate* (2020).

09. SOPHIE CAPE

Represented by Olsen Gallery

Sophie Cape is a contemporary Australian artist known for her powerful, large-scale works blending abstract and figurative elements. Her expressive paintings reflect themes of the human condition and the forces of nature, created through a dramatic, performative process. Born in 1975, Cape has exhibited widely, including at *Olsen Gallery* in Sydney, and has been featured in *Sydney Morning Herald* and *Artist Profile* amongst others.

Her connection to the Australian outback is central to her practice. Accolades include winning the *Portia Geach, National Contemporary Art Prize, Paddington Art Prize, Geelong Art Prize, International Drawing Award, John Olsen Drawing Prize*, and being a finalist in dozens of local and international awards.

She was featured on *Australian Story* and has been awarded multiple artist residencies

throughout Australia, Paris, Hong Kong, Italy, Poland, China, Austria, England, and Canada. Notable exhibitions include *Soliloquy* (2022) and *Flash Point* (2020) at *Olsen Gallery* and *An Unending Shadow* (2020) at *Shoalhaven Regional Gallery*.

Her work captivates with its intensity and exploration of the human experience.

10. MIKE MACGREGOR

Mike MacGregor is a London-born sculptor based in Australia, known for his abstract and figurative works using stone, steel, and recycled materials.

Educated at *Ealing School of Art*, he moved to Australia in 1975, developing a practice exploring form, materiality, and the environment. His work has featured in *Sculpture by the Sea* and *Swell Sculpture Festival*.

MacGregor's accolades include the *ANU Sculpture School Residency Award* (2011) and first prize at *Sculpture in the Paddock* (2013). His solo exhibitions and public works reflect an innovative engagement with materials and themes that resonate widely.

11. WILLEMINA VILLARI

Willemina is a Dutch-born contemporary artist who creates pieces in 2D and 3D. Her creative process is driven by form, balance, colour, and her desire to explore the possibilities of working with a variety of materials. Responding intuitively to the environment she lives in near the bush and the ocean, and the landscapes of the Australian outback.

She has a BFA from *NAS* in Sydney (2001) and showed her work in many group and solo exhibitions, including being a finalist at *Sculpture by the Sea, The Paddington Art Prize*, and the *Gosford Art Prize*. Willemina has received numerous awards.

Her passion as a tutor is to inspire others to create.

The materials used for the wire wall pieces created for this exhibition have mostly been sourced around the mine sites in Broken Hill.

BLOW BACK INS

7th February -27th April 2025



Broken Hill City Art Gallery
404-408 Argent Street, Broken Hill, NSW 2880
Phone: (08) 8080 3440
www.brokenhillartgallery.com.au

This publication is © Broken Hill City Art Gallery.
All artworks featured within are copyright to the
respective artists. Reproduction, in part or in whole,
without permission from the copyright holders is
prohibited.

ANN THOMSON | ANN CAPE | CHRIS
GENTLE | DANIEL PATA | GINA BRUCE
| KERRY MCINNIS | PAUL CONNOR |
RENATA PARI-LEWIS | SOPHIE CAPE |
WILLEMINA VILLARI | MIKE MACGREGOR

BROKEN HILL
CITY ART GALLERY

**BLOW
BACK
INS**